



*casa di cura*  
**SALUS**  
STRUTTURA POLISPECIALISTICA

[www.casadicurasalus.it](http://www.casadicurasalus.it)  
Certificazione Qualità UNI EN ISO 9001 dal 2004

## **GENERAL SERVICES INFORMATION**

**MULTISPECIALIST FACILITY WITH ACCREDITED  
BY THE NATIONAL HEALTH SERVICE**

**[www.casadicurasalus.it](http://www.casadicurasalus.it)**

**DIRETTORE SANITARIO DOTT.SSA ALESSANDRA ANTONUCCI**

## General Services Information Guide

### April 2025

*"This easy-to-consult guide briefly illustrates the complex as a whole, in order to make it easier to use the services offered, to make your stay more pleasant and to clarify the rights and responsibilities of users.*

*For more information, please refer to the Maps of Services relating to the specialist branch and to the descriptions on topics of particular importance, available on site and online."*

#### Index

GENERAL INFORMATION	pag. 1
Organizational Structure	pag. 2
Mission and Objectives	pag. 3
HOSPITALISATION SERVICES	pag. 5
OUTPATIENT ACTIVITIES	pag.17
Patient Rights	pag.30
Patient Responsibilities	pag.31
How to find us	pag.32
Questionnaire Form for complaints, suggestions e remarks	pag.34
Useful Contacts	pag.37

## GENERAL INFORMATION

### Who we are

Salus Private Hospital s.r.l. is a multi-specialist facility with hospitalisation and outpatient services and is accredited by the SSN.

Completely renovated in 2007 in accordance with the technical, organisational and structural requirements required by the regional regulations in force, it has been an exemplar of Pugliese Health since 1955, the date of its establishment.

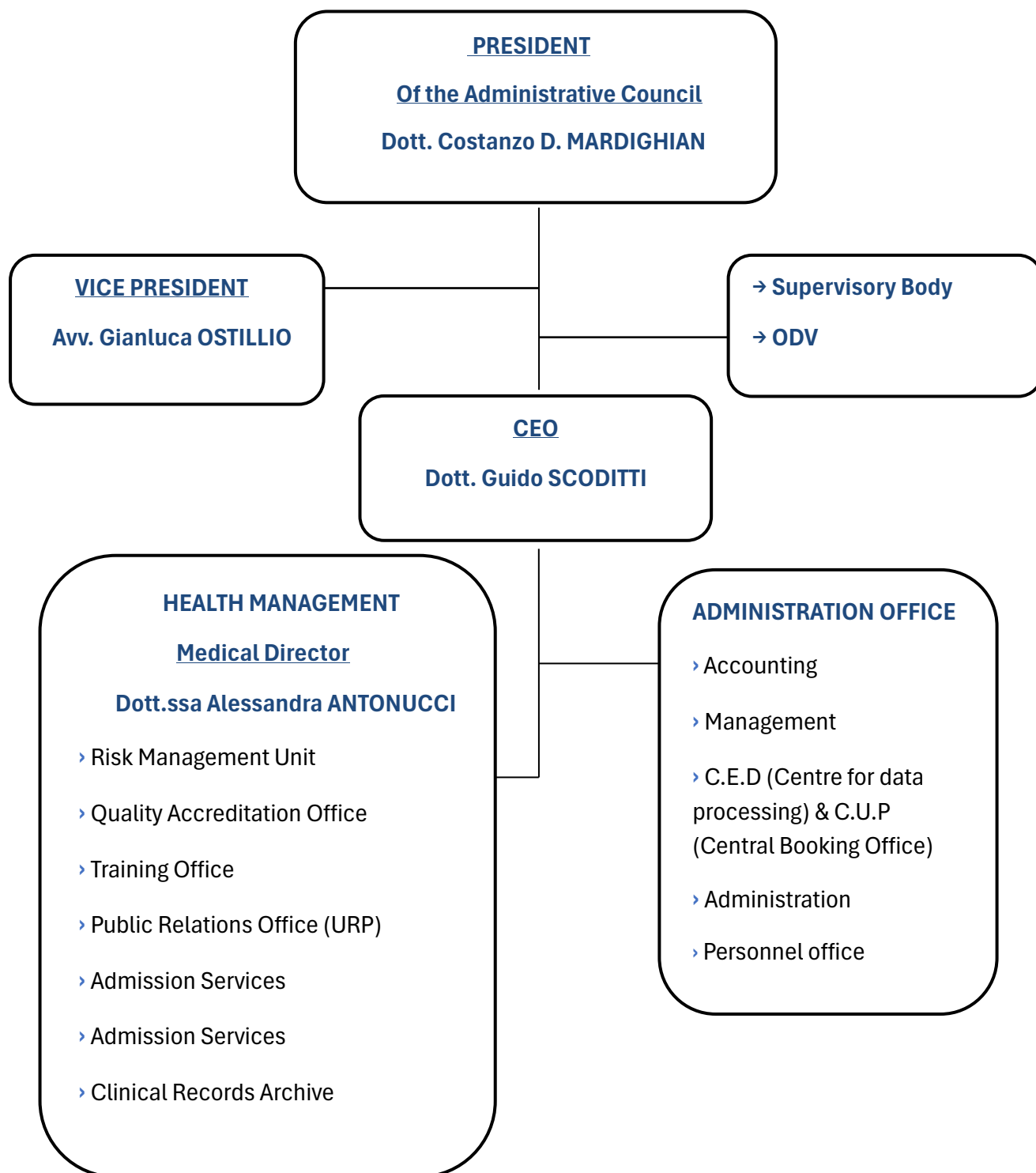
It represents a modern-day healthcare company with advanced resources and staff able to guarantee health services of the highest quality.

The Salus Private Hospital is included in the biomedical and health research program of the Euro- Mediterranean Biomedical Institute (ISBEM).

### Services

General Surgery	Outpatient clinics
Vascular Surgery	Fertility Clinic (Medically assisted procreation (PMA))
Gynecology and Obstetrics	Diagnostic Imaging
General Medicine	Digestive Endoscopy
Orthopedics	Clinical Pathology Laboratory
Recovery and Functional Rehabilitation	Anaesthesia and Resuscitation Services
Physiokinesitherapy	

## ORGANISATIONAL STRUCTURE



## **Mission and Objectives**

The Salus Nursing Home S.r.l. Company has been certified since 2004 according to the international standard UNI EN ISO 9001.

This certification was obtained after a long and constant process of company reorganization and standardization of procedures with particular attention to the critical issues of management and Quality Control.

In the company organisation, the need to improve the relationship with the Patient has always been paramount, combining clinical effectiveness with management efficiency.

This philosophy has been the common theme of its 70year history, characterised by its constant contribution to the service of medicine and the care of the sick.

All the activity of the Hospital is aimed at achieving the provision of diagnostic and treatment services through outpatient clinics and/or hospitalisation in an accreditation scheme with the SSN Health Service or independent professionals.

From this point of view, the Hospital's commitment to the training of its health workers is fundamental and is made possible by the periodic organisation of training events, some of which are also open to external healthcare professionals in the area.

**Visit our website: [www.casadicurasalus.it](http://www.casadicurasalus.it)**

## **The Hospital Building**

The hospital has 79 beds, of which 60 are accredited by the Regional Health Service (SSR) - dedicated to ordinary stay and day service outpatient activity.

Health care is entrusted to about 150 individuals, including doctors, nurses, technicians, midwives and social and health workers, as employees and consultants.

## **Hospital Area**

The hospital area, which was completely re-structured in 2007, in accordance with the requirements of the regional regulations on accreditation, is spread over three floors and consists of one and two-bed hospital rooms equipped with private bathrooms (with shower or bathtub), air conditioning, full-HD LED TV with disposable headset, articulated beds with a staff-assistance button, reading lights, shielded lights for unobtrusive night lighting. The décor of the rooms is in baydur, a disinfectable safety material. Thanks to a wired system, the sick person is constantly monitored from admission to discharge; the Complex is, in fact, equipped with about 200 access points via which trained and authorised staff, are able to access information relating to a patient at any time or can send electronic examination results, changes and updates whilst respecting the European Regulations relating to Privacy and (GDPR 2016/679).

## **Operating Theatres**

The hospital contains three operating theatres, fitted with technologically advanced equipment.

The third operating room, inaugurated in 2006, has a very modern digital angiograph used for the diagnosis and treatment of diseases of the cardiovascular system using minimally invasive endovascular methods.

## HOSPITALISATION SERVICES

### Means of Hospital Admission

It is possible to be admitted to the Nursing Home by means of accreditation, private finance, or by agreement with private insurance.

The last two methods, as they are not subject to the spending caps imposed by ASL, make it possible to obtain services more quickly and to take advantage of additional hotel services aimed at making your stay in the hospital more comfortable.

### Hospital Admission

The patient in need of hospitalisation contacts the Nursing Coordinator directly or by telephone to receive information or to make a reservation if already equipped with a request from the attending physician. The Hospitalisation must, however, be accompanied by a clinical evaluation by the Medical Staff of the Department.

In the event of a request for admission based on a policy with an insurance company, the Hospital will provide any technical support necessary for handling the relevant paperwork, through dedicated staff.

Based on the waiting time, the date of hospitalisation is given and, where applicable, the expected date of pre-admission which will then be confirmed by telephone by the Nursing Coordinator. Pre-admission is a procedure used for surgical hospitalisation and outpatient activities under the Day Service regime and is aimed at carrying out all the preliminary tests prior to the operation.

On the day of admission or pre-admission, the patient must arrive with:

- Referral from your current doctor recorded on the Single Regional Register with an indication of the diagnosis and any payment exemption ticket.
- Valid identity card.
- Tax code or health card.
- ASL Healthcare booklet or Certificate of registration with the National Healthcare Service.

At this point the patient delivers the health documentation in their possession and provides any further information relating to any ongoing medical treatment.

In the case of outpatient services under the Day Care Service, the doctor's referral must include the regional code of the requested service.

Waiting times for admission to the Hospital are based on the Priority Levels defined in the National Plan for Waiting Lists-PNGLA 2019-2021

Priority Levels:

- **Level A:** admission within 30 days for clinical cases which could potentially worsen rapidly to the point of becoming an emergency or having a severe impact on the prognosis.
- **Level B:** admission within 60 days for clinical cases which cause intense pain, serious dysfunction or serious disability but which do not manifest a tendency to worsen rapidly, and for which the wait will not have a severe impact on the prognosis.
- **Level C** admission within 180 days for clinical cases which involve minimal pain, dysfunction or disability and which do not show a tendency to worsen and for which the wait will not have a severe impact on the prognosis.
- **Level D:** admission without a defined maximum waiting time for clinical cases which cause no pain, dysfunction or disability. These cases must however be treated within 12 months.

### Advice regarding your stay at the hospital

Clothing should be limited to essentials only: nightshirt or pyjamas, socks, slippers, dressing gown and personal toiletries. Patients are strongly discouraged from bringing valuable items with them and to limit the quantity of money to that which is strictly necessary, as the clinic accepts no responsibility for any loss.

For reasons of security and patient confidentiality and in order not to hinder the work of healthcare professionals, appointments must proceed in agreement with the department nursing coordinator, and in accordance with the current regulations.

Visitors are not permitted to sit on the patient's bed nor to use the toilets in the wards. During medical procedures visitors must leave the room for reasons of privacy and not interfere with the work of the healthcare professionals.

Visitors are requested not to bring food or drinks to the inpatient so as not to interfere with the established dietary regime.

Children younger than 12 years old may only access the ward if accompanied and only with authorisation from the department personnel.



The regulations regarding access by the patient's friends and families may be subject to change due to any public health emergency or recommendations by the Health Department of the clinic. The doctors of each department are available to speak to family members or caregivers on the times and days indicated at the entrance of each department.

### **Discharge**

At the time of discharge, the clinical report for their current doctor is delivered to the Patient and any personal clinical documentation previously delivered to the Nursing Coordinator is returned.

### **Copy of Medical Record**

A medical record request must be made to the Administrative Department directly by the patient, by one of their delegates or by another entitled person (legitimate heirs, parent or guardian of a minor patient or a patient who is not able or willing to do so themselves) following proof of proxy, an identity document of the applicant and the data subject, if not one and the same.

The acquisition of the authentic copy of the medical record and its delivery to the patient's home will show related expenses.

Pursuant to Law no. 24/2017, the Health Department guarantees the release of clinical documentation within 7 working days of the submission of the request by the entitled interested parties. Any additions shall be provided within a maximum period of 30 days from the submission of the aforementioned request. A copy of the clinical record may also be requested via email at the following email address: [segr.san@casadicurasalus.it](mailto:segr.san@casadicurasalus.it)

Information on how to make a request can be found in the guide on the website [www.casadicurasalus.it](http://www.casadicurasalus.it) under Useful Information – How to request clinical records.

## **Hygiene**

Compliance with hygiene regulations is guaranteed through:

- priority use of single-use materials where possible;
- sanitisation of the hospital environment according to established procedures;
- sanitisation of bedding with procedures and methodologies suitable for ensuring maximum hygiene conditions;
- waste disposal in accordance with current legislation;
- predefined sterilization procedures that allow the traceability of all operations and operators and provide for strict quality control.

## **Restaurant Service**

The menu varies daily with a choice of two options for each course of the meal. A special diet is available if prescribed by the doctor.

### Meal times

- Breakfast 7.30
- Lunch 12.00
- Dinner 18.00

## **Cafè**

There is a cafe on the ground floor offering a full cafe service every day. Room service for in-patients is available by calling extension 5525.

## **Religious Services**

Patients may receive spiritual assistance according to their faith.

## **Translation services**

The Salus Casa di Cura guarantees foreign patients a translation service in order to enable access to all available services.

## Hospital Departments

### Hospitalisation can be arranged under:

- Accreditation scheme through the S.S.N. (except recuperation and functional rehabilitation)
- Private funding
- Agreement with private health insurance

## GENERAL SURGERY

### EQUIPE

Department Head: Dott. Azmi AUBED ZOUBI

Dott. Domenico ERRICO

Dott. Nicola NARDELLI (*Consultant*)

Dott. Alberto TAGLIABUE (*Consultant*)

Dott. Pietro FEDELE (*Consultant*)

Dott. Michele COTUGNO (*Consultant*)

---

### Ordinary hospitalisation and day-service activities

Diagnosis and treatment of benign and malignant surgical pathologies:

- the digestive system
- the abdominal wall
- the uro-genital system
- pathology of the thyroid gland, salivary and neck pathology
- male Infertility Surgery
- pathology of Breast Cancer

## VASCULAR SURGERY

### EQUIPE

**Department Head: Dott. Luigi MARIANO**

**Dott. Giuseppe SAVA**

**Dott. Claudio NEGRO**

**Dott. Sergio PETRONELLI (Consultant)**

---

### **Surgery and Endovascular Treatments:**

- Aneurysms of the abdominal aorta
- Peripheral arteriopathies
- Supra-aortic trunks
- Liver oncological diseases (Chemoembolization, thermoablation)
- Shunt Transjugular Intrahepatic Port-Systemic (TIPS)
- Treatment of diabetic foot
- Laserablation of the saphena
- Stripping of the saphena
- "Difficult" ulcers with regenerative dermis
- Varicocele (Endovascular scleroembolization)

## ORTHOPEDICS

### EQUIPE

Department Head: Dott. Sebastiano Lucio DE MARCO (Consultant)

**Dott. Teodoro. ANDRIOLO**

**Dott. Alfonso AMBROSONE**

**Dott. Homere MOUCHATY (Consultant)**

---

**Surgical services in ordinary hospitalisation and Day-Service Chirurgia**

#### **PROSTHETIC surgery:**

- Hip
- Knee
- Shoulder

#### **ARTHROSCOPIC Surgery:**

- Knee (meniscus, anterior and posterior cruciate lesion, cartilage injury, cartilage transplant)
- Shoulder (ball socket injury, ligament injury)
- Ankle (instability, impingement and chondral injury)
- Hip (confral injury, conflict, acetabolar cercline avulsion)
- Wrist
- Elbow

#### **FOOT Surgery:**

- Toe valgus (percutaneously) - Stiff toe
- Stiff toe
- Flat foot (children)

### **HAND Surgery:**

- Carpal Tunnel syndrome- Dupuytren's disease
- Dupuytren' disease
- De Quervain's disease
- Rizoarthritis
- Snap finger

### **SPINAL SURGERY:**

- Arthrodesis after vertebral stabilization with screws and bars (also in percutaneous), both at the level of the cervical spine, and of the lumbar spine
- Disc hernias (microdiscectomy)
- Lumbar stenosis

---

## **RECUPERATION AND FUNCTIONAL REHABILITATION**

Ordinary recuperation services which may be privately funded or with the agreement of a private health insurance.

In compliance with the national and regional guidelines patients who find themselves in a post acuzie condition can be accepted into the department.

---

## **GENERAL MEDICINE**

### **EQUIPE**

**Department Head: Dott. Antonio DELL'ATTI**

**Dott.ssa Annita MANNI**

**Dott. Antonio BALESTRA (Consultant)**

**Dott. Maurizio DE GIORGI (Consultant Cardiologist)**

### **Hospital and day-service activities.**

The department of general medicine diagnoses and treats the main internal diseases: neurological, cardiological, digestive system, respiratory system and metabolic.

Outpatient services (see separate section on outpatient services).

---

## **GYNECOLOGY – OBSTETRICS**

### **EQUIPE**

**Department Head: Dott. Bruno Francesco BARBA**

**Dott. Riccardo GISMONDI**

**Dott. Eugenio CAROLI CASAVOLA (Consultant)**

**Dott. Francesco LA GROTTA (Consultant)**

**Dott. Angelo ARGENTIERI (Consultant)**

---

### **Ordinary hospitalisation and day service activities**

Clinical Activity

#### **OBSTETRICS**

- Voluntary termination of Pregnancy (IVG)

#### **GYNECOLOGY**

- Laparotomic Gynecological Surgery
- Urogynecological surgery
- Endoscopic surgery: (Resectoscopy – Laparoscopy -Hysteroscopy)
- Portio Laser Surgery – Vagina – Vulva
- Laser Therapy (Mona Lisa touch)

## **FERTILITY CLINIC LEVEL II**

### **(MEDICALLY ASSISTED PROCREATION - PMA)**

#### **EQUIPE**

**Head Doctor: Dott. Bruno Francesco BARBA**

**Head Scientist: Dott. Eugenio CAROLI CASAVOLA (Consultant)**

**Gynecologist: Dott. Riccardo GISMONDI**

**Biologist: Dott. Giuseppe BALSAMO**

**Embryologist: Dott.ssa Daniela D. MONTAGNA (Consultant)**

**Urologist: Dott. Michele COTUGNO (Consultant)**

**Psychologist: Dott.ssa Rosanna CAVALLO (Consultant)**

---

#### **A) Uterotubaric and ovarian diagnostics**

- Transvaginal and transabdominal pelvic ultrasound
- Hysteroscopy
- Sonohysterosalpingography
- Count of antral follicles
- Ultrasound and functional monitoring of ovulation
- Pharmacological induction and clinical monitoring of superovulation

#### **B) Andrological evaluation**

#### **C) Laboratory Diagnostics\***

- Examination of seminal fluid according to WHO Guidelines 2010
- Biochemical tests on seminal fluid (zinc, carnitine, fructose, citric acid, alpha-glucosidase)
- ANDROSITOL TEST



- Direct and indirect research of anti-sperm adhesive antibodies
- Seminal liquid capacity test
- DNA fragmentation test
- Oxidative stress on seminal fluid and serum
- Post- Coital Test
- Microbiological exam. of seminal fluid
- Microbiological examinations on vaginal and endometrial secretion
- AMH (Antimullerian Hormone)
- Endometrial reactivity evaluation test

**\*For information and reservations contact the Embryologist Dr. Daniela Domenica Montagna (392.4843565)**

#### **D) Medically Assisted Procreation (PMA)**

- Homologous and heterologous in vivo fertilization techniques (Intrauterine insemination, AIH-IU)
- In vitro homologous and heterologous fertilization techniques (IVF, ICSI) with blastocyst culture
- Eco-guided transvaginal ovocyte recovery under sedation
- Eco-guided transfer
- Recovery of spermatozoa from the testicle/epididymology (PESA, TESA, TESE, MESA) or from urine (retrograde ejaculation)

#### **E) Cryobiology**

- Storage in liquid nitrogen of male and female gametes even in cancer patients
- Preservation of embryos

## **F) Couple infertility surgery**

### **Gynecological surgery**

- Operational hysteroscopy (Polypectomy, Myomectomy, Adesiolysis, Septiuterine Plastic)
- Diagnostic-operative Laparoscopy vs Laparotomy (Pelvic and Ovarian endometriosis, Miomectomy, Plastic utero-tubaric malformations, Lysis of pelvic adhesions, Removal of ovarian cysts, Ovarian drilling, Tubaric perveavement test)

### **Andrological surgery**

- Varicocele (by trans-national or endovascular surgery)
- Testicular biopsy

## OUTPATIENT ACTIVITIES

Outpatient services are provided under private funding or in agreement with private insurance companies.

Only the benefits of Radiodiagnostics are also provided under the credit scheme with the National Health System within the limits of the expenditure cap provided by ASL.

Outpatient activity is mainly concentrated on the ground floor and basement floor.

They can be booked:

- In person at the information and reservations desk open from Monday to Friday from 8.00 to 19.00 and Saturday from 8.00 to 12:00 p.m.
- By telephone at 0831.581505 from Monday to Friday from 9.00 to 19.00 and Saturdays from 8.00 am to 12.00 pm.

At the time of booking you should let us know the necessary services so that they can be prepared.

For waiting times for outpatient services, the Hospital adheres to the priority levels provided by the National Waiting Lists Plan -PNGLA 2019-2021

Priority classes:

- Level U (Urgent): procedure to be performed as soon as possible and, in any case, within 72 hours;
- Level B: (Short): procedure to be performed within 10 days;
- Level D (Differible): procedure to be performed within 30 days for visits/within 60 days for diagnostic tests;
- Level P (Scheduled): procedure to be performed within 120 days (from January 1, 2020).

## IMAGING DIAGNOSTICS

### EQUIPE

**Dott. Maurizio MELLE – Department Head Imaging Diagnostics services**

**Dott. Andrea MARDIGHIAN - Department Head Interventional Radiology Department**

**Dott. Francesco COMPARATO**

**Dott. Antonio DELL'ATTI (Ecocardiography)**

**Dott. Maurizio DE GIORGI (Ecocardiography)**

**Dott.ssa Grazia ANGONE**

**Dott. Elvino CESARANO**

**Dott. Diego PALLADINO**

**Dott. Pantaleo Mario SPAGNOLO (Neuroradiology)**

---

### Diagnostic Areas

❖ TC

TC Multilayer spiral (128 Slices)

Internist, neuroradiological, osteo- articular, vascular

❖ MAGNETIC RESONANCE

➤ High-cam Magnetic Resonance (1,5 Tesla)

Neuroradiological, internist, osteo- articular, vascular, colangio-MRI

❖ Traditional digital radiology

❖ Ecography

❖ Ecocardiography

Anesthesia tests

**The following services are specified below**

### **MRI Breast Screening**

#### **Signs**

- Contrast (from the 7th to the 14th day of the menstrual cycle);
- Completion of the level I diagnostic process in doubtful cases;
- Screening delle donne con codice genetico alterato (BRCA1 – BRCA2);
- Screening of women with altered genetic code (BRCA1 – BRCA2);
- Search for multifocality and multicentricity in confirmed breast Cancer;
- In the presence of secretion from the nipple and suspected papillomatosis of the ducts.
- Assessment of neoadjuvant therapy for patients affected with breast cancer;
- Differential diagnosis of surgical scar and neoplastic recurrence;
- In patients with CUP-Syndrome (metastatic lymph nodes in the presence of mammograms and negative ultrasounds);
- Peerless in the study of breast implants.

### **Liver MRI with hepatobiliary-specific contrast**

### **Multiparametric Prostate MRI**

#### **Information:**

- Patients with a diagnosis of prostate cancer from a previous biopsy will undergo an active monitoring regime;
- Patients with a suspected neoplasm who have never had a biopsy will have a targeted biopsy;
- Patients subjected to multiple biopsies and diagnosed with a neoplasm with a 'gleason score' of 3+4 or higher;

## Intestinal MRI

### Signs:

- Crohn's disease and chronic intestinal inflammation.
- Fistulas;
- Abdominal abscesses;
- Chronic diarrhea;
- Chronic anaemia;
- Coeliac disease;
- Malabsorption syndrome;
- Chronic abdominal pain;
- Loss of blood in stools.

## Colonic - MRI

### Signs:

- Chronic intestinal illnesses.

## 'Diffusion whole body' MRI

### Signs:

- Hematological diseases (lymphomas or myelomas)
- Assessment of skeletal lesions in cancer patients.
- Identification of occult neoplasms.

## Pelvi - MRI

Search for deep pelvic endometriosis.

These are carried out under accreditation, private funding or with the agreement of private **health insurance**.

## Functional MRI of pelvic floor (Cystography, defecography, small intestine series procedure, colposcopy)

### Signs:

- Urinary and/or fecal incontinence
- Genital and rectal prolapse
- Generic pain
- Blocked defecation
- Chronic constipation

Note: This examination offers both a static and dynamic view of the pelvic floor by using ionising radiation.

### Ultrasound:

- Internal ultrasound
- Muscle-tendon and soft tissue
- Endocrine
- Mammary
- Neonatal
- Transrectal prostate
- Echocardiography

---

**For more information contact Imaging Diagnostics Services**

- Tel. 0831.516913
- e-mail: [segr.imm@casadicurasalus.it](mailto:segr.imm@casadicurasalus.it)

## ANALYSIS LABORATORY

**Head of Department: Dott. Giuseppe BALSAMO**

- Clinical chemistry
- Hematology and Immunohematology
- Clotting
- Serology
- Immunoenzymatics
- Hormonal investigations
- Bacteriology
- Virology (Serological)

---

## GENERAL SURGERY

**Dott. Azmi AUBED ZOUBI (Head)**

**Dott. Domenico ERRICO**

**Dott. Nicola NARDELLI (Consultant)**

- Specialist visits
- Small surgical operations as outpatient

Hospitalisation services (see Section on General Surgery)



## VASCULAR SURGERY

**Dott. Luigi MARIANO (Head)**

**Dott Giuseppe SAVA**

- Specialist visits
- Eco-Color-Doppler
- Sclerotherapy
- Treatment of ulcers
- Elasticated dressings and bandages

Hospitalisation services (see Section on Vascular Surgery)

---

## GYNECOLOGY - OBSTETRICS

**Dott. Bruno Francesco BARBA ((Head))**

**Dott. Riccardo GISMONDI**

**Dott. Eugenio CAROLI CASAVOLA (Consultant)**

**Dott. Angelo ARGENTIERI (Consultant)**

- Diagnostic gynecology (Echograph-Hysteroscopy)
- Contraception
- Menopause
- Clinical and ultrasound monitoring of pregnancy
- Screening for genetic diseases (1st trimestre)
- Laser terapia (Monna Lisa Touch)
- Amniocentesis
- Villocentesis
- Outpatients VIP (Voluntary Interruption of pregnancy)
- Outpatients post-release check ups

Hospitalisation services (see Section on Gynecology – Obstetrics)

## **OUTPATIENTS FERTILITY CENTRE PMA (MEDICALLY ASSISTED PROCREATION)**

**Dott. Bruno Francesco BARBA (Medical Head)**

**Dott. Eugenio CAROLI CASAVOLA (Scientific Head)**

**Gynecologist: Dott. Riccardo GISMONDI**

**Biologist: Dott. Giuseppe BALSAMO**

**Embryologist: Dott.ssa Daniela D. MONTAGNA (Consultant)**

**Urologist: Dott. Michele COTUGNO (Consultant)**

**Psychologist: Dott.ssa Rosanna CAVALLO (Consultant)**

- Diagnosis of male infertility by seminal fluid examination (following W.H.O. 2010) and clinical evaluation
- Ovarian and utero-tubaric ultrasound diagnostics
- Pharmacological induction of superovulation with clinical monitoring.
- Evaluation of cryopreservation of oocytes, spermatozoa, embryos and blastocysts.

---

## **ANESTHESIA-RESUSCITATION**

**Dott.ssa Daniela BERARDI (Head)**

**Dott. Vitangelo SOLIMINI (Consultant)**

**Dott. Franco CAPUTO (Consultant)**

**Dott. Fernando GRASSO (Consultant)**

**Dott. Vito MONTARULI (Consultant)**

**Dott. Maurizio CURSANO (Consultant)**

Specialised visits for:

- Surgical fitness assessment
- Risk assessment for the use of contrast tests
- Consultancy at the Endoscopy Service for services in narcosis

---

## ORTHOPEDIA

Head Dott. Sebastiano Lucio DE MARCO (Consultant)

Dott. Teodoro ANDRIOLO

Dott. Alfonso AMBROSONE

Dott. Homere MOUCHATY (Consultant)

- **Specialist Visits**

Hospitalisation services (see section on Orthopedica)

---

## PHYSIATRY

Dott. Teodoro ANDRIOLO

- **Specialist physiatric visits**

---

## PHYSIOKINESITHERAPY

- **Manual physiotherapy services:** Neuromotory and respiratory rehabilitation, kinesitherapy, proprioceptive and postural gymnastics; massotherapy.

- **Equipment based physiotherapy services:** Human T.E.C.A.R therapy, Laser Jag, shockwaves, Magnetotherapy, Ultrasound

- **Rehabilitation area**

---

## GENERAL MEDICINE

### **Dott. Antonio DELL'ATTI (Head)**

- Specialist visits of general medicine

Hospitalisation services (see section on Internal Medicine)

---

## CARDIOLOGY

### **Dott. Antonio DELL'ATTI**

### **Dott. Maurizio DE GIORGI**

- Cardiological Visits
- ECG
- Cycle ergometer strain test
- Holter ECG
- Holter Pressorio
- Echocardiogram
- Bubble Echocardiogramme

Pre-defined “packages” of services are available.

---

## NEUROLOGICAL-NEUROPHYSIOLOGICAL CLINIC

### **Dott. Massimo MARZULLO (Consultant)**

- Neurological Visits
- Electromyography

Hospitalisation services (see section on General Medicine)

## DIGESTIVE ENDOSCOPY

**Dott. Luigi DE FAZIO (Consultant)**

**Dott. Giuseppe FUNARO (Consultant)**

**Dott. Marcello Clemente VECCHIO (Consultant)**

- Esophagusstroduodenoscopy (Gastroscopy)
- Colonoscopy (also under deep sedation with anesthesiology assistance)
- Endoscopic removal of benign colon neoformations
- Study of diseases of the small intestine by microcamera (video capsules) which, ingested, allows the recording of images during its transit through the intestine
- Lactose intolerance test by duodenal biopsy.
- Breath Test per Helicobacter pylori
- Specialised visits

Admittance activities in Outpatients Regime

### Gastroenterology

**Prof. Marcello INGROSSO (Consultant)**

---

## OTOLARYNGOLOGY

**Dott. Pasquale PINTO (Consultant)**

- Specialised visits
- Audiometric tests
- Vestibular tests
- Fibroendoscopy of upper airways

---

## OPHTHALMOLOGY

**Dott.ssa Maria Rosaria ROLLO (Consultant)**

**Specialist in Ophthalmology**

- Correction of vision defects (myopia, hypermetropia and astigmatism)
- Diagnosis and treatment of diseases of the cornea and eye areas
- Diagnosis and treatment of glaucoma
- Diagnosis and treatment of age-related macular degeneration, peripheral retinal degeneration and diabetic retinopathy

**A paediatric eye service is available for the diagnosis and treatment of eye diseases in younger patients, screening for strabismus and treatment of amblyopia.**

We carry out:

1. Eye visits
  2. ANGIO - OCT macula and nerve OCT, fibres and ganglion cells
  3. GENETIC TESTING for identifying the risk of developing macular degeneration
  4. CROSS-LINKING FOR KERETOCONUS: treatment capable of stopping or slowing down the natural development of keretoconus by increasing the strength and rigidity of the cornea
-

## PSYCHOLOGICAL CLINIC

**Dott.ssa Rosanna CAVALLO (Consultant)**

**Specialist in Clinical Psychology**

- Psychological consultations
- Individual, couple and family support sessions
- Psychodiagnostic and neuro-psychological assessment of adults
- Psychological support with the procedures adopted by the Physiopathology of Human Reproduction service
- Evaluation and psychological support in bariatric surgery

## PATIENT RIGHTS

The patient has the right to be assisted and cared for with care and attention, with respect for their human dignity and their philosophical and religious convictions.

The patient has the right to receive information in a confidential, relevant, comprehensible and timely manner on the diagnostic and therapeutic procedures which he or she will undergo; on the relative scheduling, on their meaning and related risks, on secondary and adverse effects and on the possibility of alternative investigations and treatments, even if carried out in other facilities.

The Patient is entitled to receive information enabling them to give consent, effectively informed, before undergoing any treatment or operation.

The Patient is guaranteed confidentiality of data relating to their illness and any other personal circumstances.

Pregnant women, disabled patients and children will be given priority to access health services.

The Patient has the right to the protection of his and privacy during medical, nursing, diagnostic and therapeutic practices.

The Patient has the right to make a complaint, every time an infringement takes place, simply by using the questionnaire which will be forwarded to the relative department, in the case of particular severity, directly to the Nursing Coordinator or the Health Department.



## RESPONSIBILITIES

The individual, when entering the Health Facility, is invited to behave responsibly at all times, with respect and consideration for the rights of other patients, and with the wish to collaborate with medical, nursing and technical staff.

Members of the public are required to respect the environment, equipment and furnishings that are located within the Hospital Facilities.

Patients are requested to respect the hours of the health and hotel activities, established by the Health Department, to allow the normal care and therapeutic activities to be carried out and to promote the quiet and rest of the other Patients.

Visitors, in addition to respecting the entrance times in the Hospital must avoid over-crowding the corridors and hospital rooms for hygienic and sanitary reasons and out of respect for the patients present.

Children under the age of 12 are not allowed to enter the hospital wards without specific authorization from the department concerned.

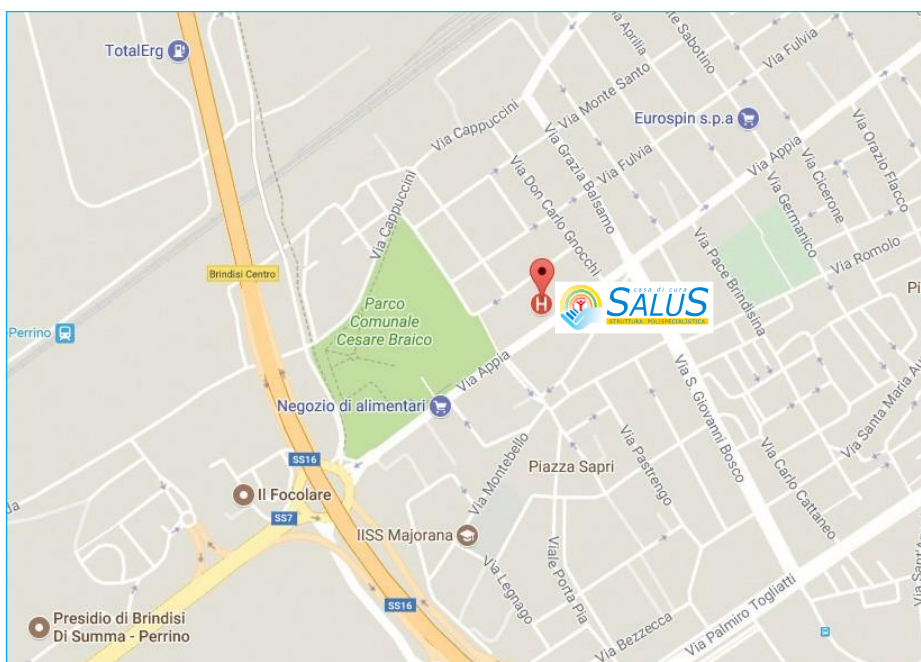
Visits to the Patient, outside the set hours, must be authorized, in situations of particular need, by doctors or the departmental infirm coordinator.

Smoking is prohibited in the Nursing Home. Compliance with this provision is specified by law.

The diet provided by the Nursing Home is qualitatively and quantitatively controlled according to specific diets. It is therefore not recommended, as it is potentially harmful, to bring food to patients from outside.

An individual has the right to correct information about the organization of the Health Structure, but it is also their responsibility to inquire in an appropriate time and manner.

## HOW TO REACH US



- › By bus: Bus stop Brindisi Via Appia Clinica

The updated bus routes can be viewed by consulting the website <https://www.stpbrindisi.it/index.php/orari-brindisi>.

- › By car: Salus Casa di Cura is located at Via Appia n 366, Brindisi

## COMPLAINTS, SUGGESTIONS AND OBSERVATIONS

Dear Sir / Madam,

Please use this form to express your comments or suggestions or to make a formal complaint about any disruption experienced during your visit to the Hospital.

This document can be delivered directly to the URP (at the Health Department) or placed in one of the boxes located inside the hospital building.

Whilst anonymity is assured, your signature and the information referring to the department/service, the day and time at which the reported event occurred, are essential elements for us to gain a full understanding of the event and to implement actions aimed at avoiding a repetition of the event.

The information acquired through this will be processed in full compliance with the provisions of GDPR 2016/679 (Privacy Code).

Thank you.

The Medical Director

☐ **COMPLAINT**

☐ **SUGGESTIONS**

☐ **OBSERVATIONS**

I the undersigned,

Name and Surname \_\_\_\_\_

Born in \_\_\_\_\_

on \_\_\_\_\_, resident at:

City/town \_\_\_\_\_

Province \_\_\_\_\_

Telephone Number \_\_\_\_\_

e-mail: \_\_\_\_\_

Is completing the form on behalf of:

☐ myself

☐ another person:

I the undersigned,

Name end Surname \_\_\_\_\_

Born in \_\_\_\_\_

on \_\_\_\_\_, resident at:

City/town \_\_\_\_\_

Province \_\_\_\_\_

Telephone Number \_\_\_\_\_

e-mail: \_\_\_\_\_

Relationship to patient \_\_\_\_\_

☐ In possession of proxy

Department/Medical Unit concerned \_\_\_\_\_

Date and time when the event happened \_\_\_\_\_

Health workers concerned \_\_\_\_\_

\_\_\_\_\_

\_\_\_\_\_

\_\_\_\_\_

Description of the event \_\_\_\_\_

\_\_\_\_\_

\_\_\_\_\_

\_\_\_\_\_

\_\_\_\_\_

\_\_\_\_\_

\_\_\_\_\_

\_\_\_\_\_

\_\_\_\_\_

\_\_\_\_\_

Date of notification \_\_\_\_\_

Signature \_\_\_\_\_

Address to which the response should be sent:

Name\_\_\_\_\_

Surname\_\_\_\_\_

Road\_\_\_\_\_No.\_\_\_\_\_

City/town\_\_\_\_\_CAP\_\_\_\_\_

Province\_\_\_\_\_

I, the undersigned, under the guidelines of GDPR 2016/679, with regard to the protection of individuals and other persons with respect to the processing of personal data, I give my consent to this Health Structure, for the purpose of managing the content of this form, to process my personal and particular data.

Date,\_\_\_\_\_ Signature\_\_\_\_\_

#### **SECTION RESERVED FOR HOSPITAL STAFF**

Protocol n.\_\_\_\_\_ Form received on following date\_\_\_\_\_

- |                                      |                                     |
|--------------------------------------|-------------------------------------|
| <input type="radio"/> Direct         | <input type="radio"/> Telephone     |
| <input type="radio"/> Postal service | <input type="radio"/> Fax           |
| <input type="radio"/> E-mail         | <input type="radio"/> Internal post |

Manager's signature\_\_\_\_\_



## **Useful numbers**

### **Information and booking**

**Call Tel: 0831.581505**

**And follow the voice instructions to be connected to the right number:**

- Hospital management 0831.530286 - [dir.san@casadicurasalus.it](mailto:dir.san@casadicurasalus.it)
- Administrative management 0831.583501 - [dir.amm@casadicurasalus.it](mailto:dir.amm@casadicurasalus.it)
- Radiology CAT Scans, MIR, Ultrasound 0831.516913  
[segr.imm@casadicurasalus.it](mailto:segr.imm@casadicurasalus.it)
- Public Liaison Office (URP) – 0831581505 – Extension n.5

The list of services will be updated periodically to provide up to date information to the public.